

# **The Internet from Scratch**

# Contents

How do I get connected to the Internet? .....	3
What is Broadband? Is it for me? .....	5
What is the internet? .....	6
What can I do on the World Wide Web? .....	6
What are all those buttons on the toolbar? .....	9
How can I make a list of my favourite web sites? .....	10
How can I set up a Web mail account? .....	12
How do I search for stuff on the Web? .....	17
Tips for Searching .....	20
Tips for Buying On-line .....	20
Glossary .....	22
Web Site Directory .....	23

## How do I get connected to the Internet?

It's possible to access the internet if you go into your local library, an internet café or a IT training centre, but what if you wanted to use the internet at home?

First of all, you'll need to make sure that your computer is fitted with a **modem**. Most computers these days are sold equipped with a modem, but if your computer is an older model you may like to check whether it has a modem and the speed of the modem. Ask your tutor for details.

A modem changes computer signals into telephone signals and back again so that information can be sent from computer to computer over a normal telephone line.

Next, you'll need to make sure that you have a telephone line that can be connected to your computer. It is worth bearing in mind that while you are using the internet you won't be able to use your telephone (if it is using the same line) at the same time.

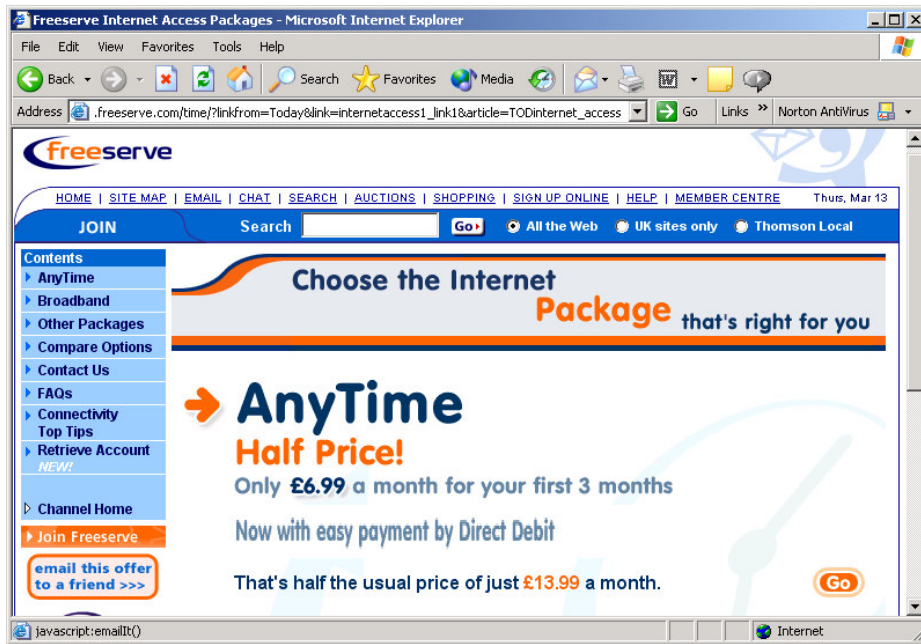
Finally, you'll need to set up an account with an **Internet Service Provider** (or ISP for short). An Internet Service Provider will provide you with access to the internet. Just as with mobile phones, you can either pay a monthly subscription for the service or you can Pay-As-You-Go. It is up to you to decide which is the best tariff for you, based on how much you think you'll use the internet. You may also have to pay for the cost of using the telephone line while connected to the internet, but this will be a local phone rate.

There are many internet service providers. You can get a starter CD which will supply the software for your internet access from many different places, for example your local supermarket, shops that sell electrical goods; Dixons, Comet, PC World and other smaller computer shops.

Some of the popular internet service providers include:

- Freeserve
- AOL
- BT Openworld
- Tiscali
- Tesco
- One.tel

This is a typical web page for an internet service provider, in this case Freeserve, showing one of the packages they offer:



There may be additional benefits from some internet service providers such as an unlimited number of email addresses, free web space if you wanted to make your own web site and even free competitions.

Your internet service provider may also provide a help service with a special number that you can ring if you are experiencing any internet problems. Sometimes it is free, but frequently it is a costly premium rate number, so beware!



## Activity

Find out which internet service provider, Tiscali or One.tel provides the cheapest rate, over the period of a year, if you use the internet both in the evenings and during the day.

## Summary

To connect to the internet you'll need:

- A modem
- A telephone line
- An account with an Internet Service Provider



## What is Broadband? Is it for me?

Usually you'll access to the internet with a dial-up connection. Each time you log on to the internet you will dial through to your internet service provider. However, this is quite a slow way of doing things. The connection is limited by the speed of your modem and at busy times it may not be possible to get a connection.



A quicker method of connection is broadband. With broadband it is possible to do everything you would normally do with a standard connection, but it is faster at sending and receiving emails and bringing up web pages.

Downloading files off the internet is considerably easier and quicker with broadband and viewing good quality live video across the web is something that is really only possible with broadband.

Your connection to the internet is always on and you don't need to dial up every time you connect to the internet to surf the web or send email. This gives the advantage that there should be no connection problems at times when the internet is especially busy, like Friday afternoons.

If you are using broadband with your internet service provider they will charge a flat rate per month so there are no additional charges (such as local phone calls added to your phone bill for the time you are online).

You will also be able to use your telephone line for phone calls if you are using the internet.

To connect to the internet with broadband you will need to check that broadband is available in your area. At the moment, it is not a facility that is available in Portishead. However, BT has set up a registration scheme where residents in a certain area can pledge to sign up for broadband. Once enough people have signed up, BT will upgrade the local exchange. In order to determine just how many people is 'enough' BT have set up what they call trigger levels. These are set at between 200 and 400 interested residents in an area.

Broadband is slightly more expensive than a conventional internet connection. It is currently priced £20-£30 depending on the internet service provider.

## Summary

The advantages of broadband:

- Fast
- Always connected
- Can use the telephone at the same time



## What is the internet?

The **internet** is a massive network of computers. It connects millions of computers together across the world and these computers can communicate with each other. The **World Wide Web** (also known as the Web) is a way of accessing information across the internet. **Email** is a method of sending messages and files between computers on the internet.

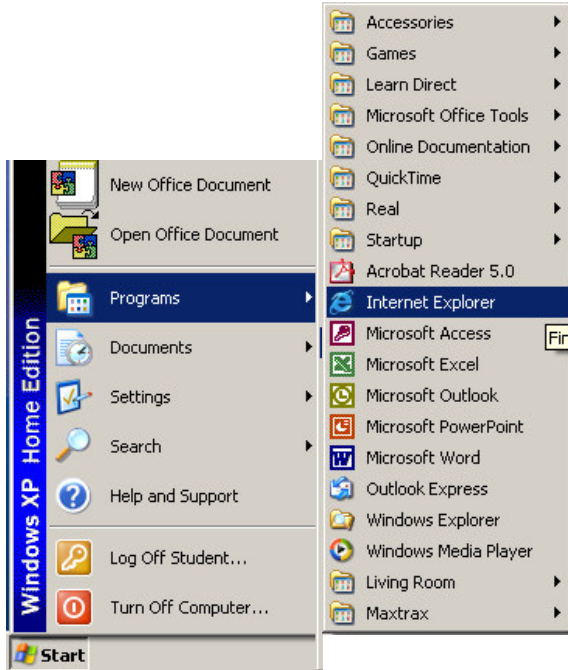
## What can I do on the World Wide Web?

Pretty much anything! Just think about all the occasions when you need to find out particular pieces of information and all the different places you would look to find your answer. For example, where would you go to find the telephone number of a local plumber? Where would you look for a road map of Birmingham city centre? Where would you find out how much your phone bill is going to be? Where would you go to buy the latest Kylie CD? Where would you book your summer holiday? These are all things that can be done on the World Wide Web.

## How do I use the World Wide Web?

On the computers in the centre, you will be able to connect to the World Wide Web using a program called **Internet Explorer**. Internet Explorer is a program called a **browser**. Browsers are programs that enable you to view pages on the World Wide Web.

Open Internet Explorer by clicking on **Start**, then click on **Programs** and select **Internet Explorer**.



The first page that your browser connects to is called the **Home Page**. This could be any website and it is possible to set this yourself to your favourite website.



### Notes for the user at home.

You may find that using the internet at home is different to using it at work, or in an internet café:

1. You may be using a different browser, for example Netscape Navigator or you may be an AOL user. AOL has its own browser program.
2. When you open up your browser you may get a Dial-up connection window.
3. Your home page may be a different web site.

When Internet Explorer has opened up, click in the **Address box**. This will highlight the current address. Use the backspace to delete the address that is held in the box.



Type in the address <http://www.bbc.co.uk> and then press the **Enter** key. You do not need to type **http://** when you are typing an address. Start with **www**. The page will take a little time to load (after all your computer has to link up through the telephone lines or satellite connection with the BBC's computer in London!) You'll know that Internet Explorer is trying to access the web site because the flag will flutter until the page has been successfully reached.



The page that is loaded is the home page for the BBC web site. This page displays a menu for the different pages you can view. There are pages on children's programs, the weather, News and sport.

Move your mouse over the page and you'll notice that the mouse pointer changes from an **arrow** to a **hand**.



It changes to a hand when it is positioned over a **link**. If you click on a link you will be taken to another page.





## Activity

Find the link on the BBC website for the TV listings. Click on the link to bring up the menu for the different channels. Click on BBC2 and find out what program is on at 9pm this evening.

## What are all those buttons on the toolbar?

In the Internet Explorer window the bar at the top of the page contains a number of different buttons. These are all useful for finding your way around the web.



Clicking on the **Back** button will return you to the previous page



Clicking on the **Forward** button will take you to the next page. This button will only work if you have used the Back button beforehand. The button will be grey if there is no page further forward to go to.



Clicking on the **Stop** button will stop Internet Explorer loading a page. This is a good button to use if a page is taking a really long time to appear or you have changed your mind and no longer want to see the page.



Clicking on the **Refresh** button will reload the current page. This is a good button to use if the web page you have been trying to load does not appear properly.



Clicking on the **Home** button will take you back to your Home page. This is the page that first loads when you open up Internet Explorer.



## Activity

Click these buttons in the following order:

1. Back
2. Forward
3. Home

What is the web address of the page you end up on?

## How can I make a list of my favourite web sites?

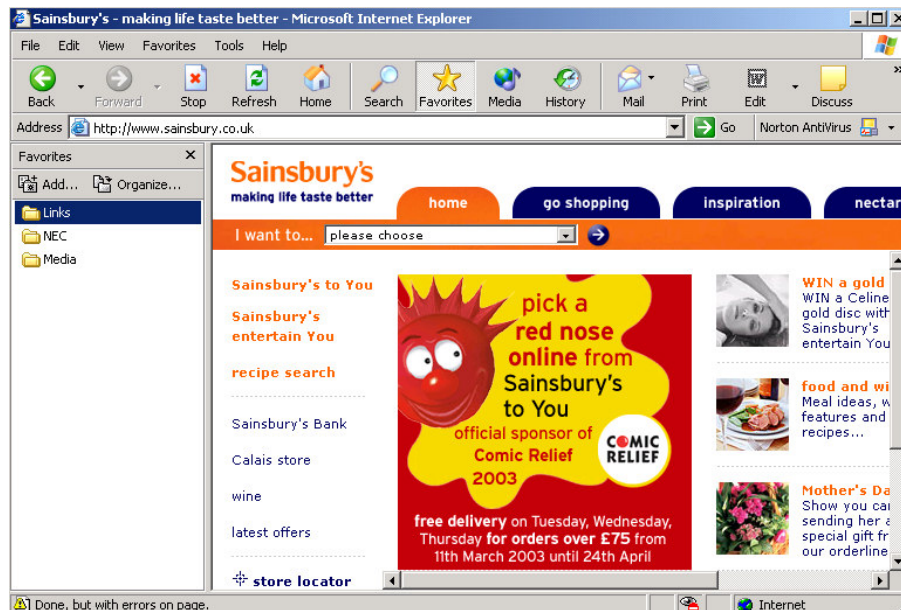
Writing in the web address of the website you want to visit each time can be time-consuming and awkward. You don't need to remember the web address at all as you can get the computer to do that for you!

It is possible to make a list of all your favourite web sites. After that all you need to do is to click on a particular item in the list to load that particular web page.

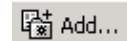
First of all, go to the web site that you wish to put in your list. Type in the address for the Sainsbury's web site: [www.sainsbury.co.uk](http://www.sainsbury.co.uk). Next, click on the Favorites button.



This will add an extra panel to your window. The list of favorites will appear in this panel.



To add the Sainsbury's web page to your list of favorites, click on the **Add** button.





The Sainsbury's web page has now appeared in the Favorites list.



## Activity

Add the WH Smith web site to your list of favourites. The address of the web site is [www.whsmith.co.uk](http://www.whsmith.co.uk)

## How can I set up a Web mail account?

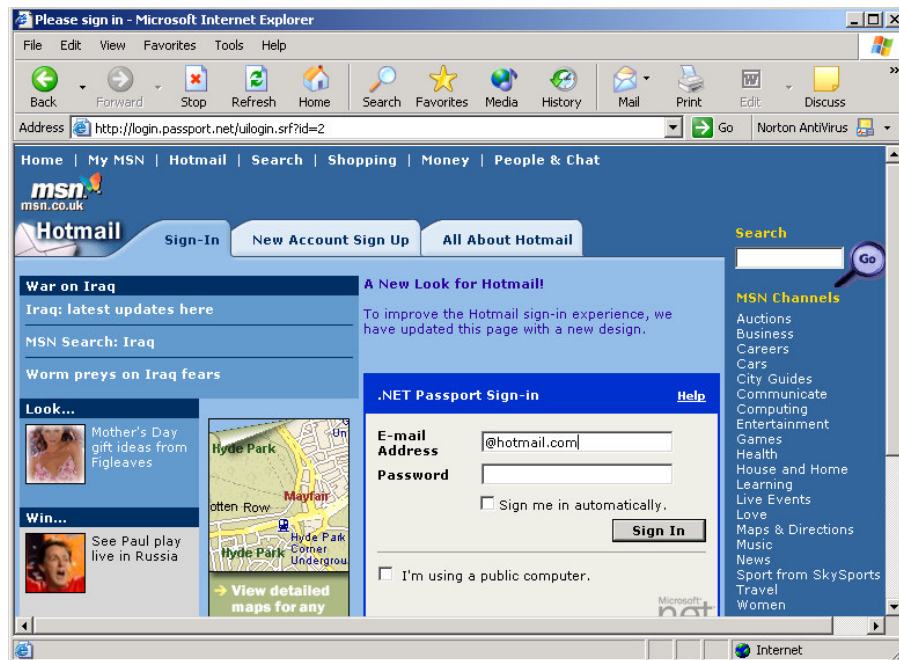
When you are connected up to the internet through your internet service provider, you will be provided with access to the World Wide Web and one or more email addresses. These email accounts can be used from your home computer to send emails, but there may be times when you would like to use an email account when you are elsewhere, for example at work or at a library.


It is possible to set up a **web mail** account for this purpose. A web mail account is an email address that you can access through the World Wide Web. Your email address is the same wherever you decide to access your email account. You can also read or send emails from anywhere (including the other side of the world!)

There are several different websites from which you can get hold of a free web mail account. These include:

- Hotmail ([www.hotmail.com](http://www.hotmail.com))
- Yahoo ([www.mail.yahoo.co.uk](http://www.mail.yahoo.co.uk))

Go to the Hotmail web site. The web address for hotmail is [www.hotmail.com](http://www.hotmail.com).



Click on the New Account Sign-up tab.  Fill in the registration form on the web page with your details in the **Profile Information** section:

**Profile Information** [Help](#)

**First Name**

**Last Name**   
Your first and last names will be sent with all outgoing e-mail messages.

**Language**

**Country/Region**

**State/Territory**

**Postal Code**

**Time Zone**

**Gender**  Male  Female

**Birth Date**    (ex. 1999)

**Occupation**

In the **Account Information** section, choose an email address. All email addresses will end in @hotmail.com. You may choose any letter (A-Z) or any number (0-9). It is not possible to use a space within your email address, but you may use an underscore symbol instead. The password must be at least 6 letters long. It will appear as a row of asterisks. This is supposed to keep it secret from anyone looking over your shoulder as you type!

It's a good idea to remove the ticks on the **Hotmail Member Directory** and the **Internet White Pages** otherwise you may get a lot of junk mail.

Make sure you also type the coded letters at the bottom of the page. These are to stop people maliciously setting up thousands of accounts that could be used to send junk mail.

**Account Information**

**E-mail Address**  @hotmail.com

**Password**  
Six-character minimum; no spaces

**Retype Password**

**Secret Question**

**Secret Answer**

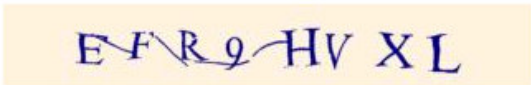
**Services**

Hotmail Member Directory

Internet White Pages

Use these check boxes to indicate whether you'd like to be listed in these Internet directories. [More information about directories](#)

**Registration Check** Type the characters that you see in this picture. [Why?](#)



Characters are not case-sensitive.

Remove ticks from Member Directory and White Pages



Click on **I agree** [I Agree](#) at the bottom of the page to continue. Someone else may already have picked your chosen email address. You may have to select another one. You can choose from the list that hotmail provides or you can try to create one that you are more likely to remember.

#### Account Information

**Someone has already selected the e-mail address you typed. Please try one of these:**

- PeggyMitchell\_1
- peggy\_mitchell\_2
- PeggyMitchell\_88
- peggy\_mitchell\_474

Or, try another one that you create:

@hotmail.com

Once you have chosen your email address click on **I agree** [I Agree](#) at the bottom of the page.

The next page will show that the registration is complete and you now have an email address.

#### Registration Is Complete

Thank you for registering the following e-mail address as your Microsoft® .NET Passport:

***peggy\_mitchell1940@hotmail.com***

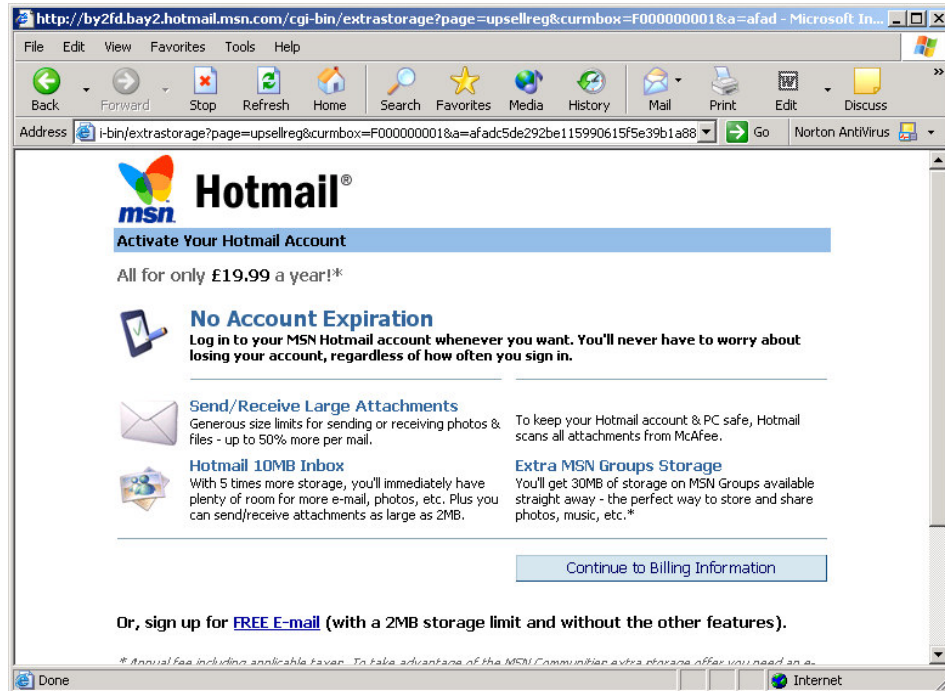
**Remember:**  
Sign in with your .NET Passport e-mail address and password wherever you see the .NET Passport sign-in button.

[Sign In .net](#)

[Continue](#)

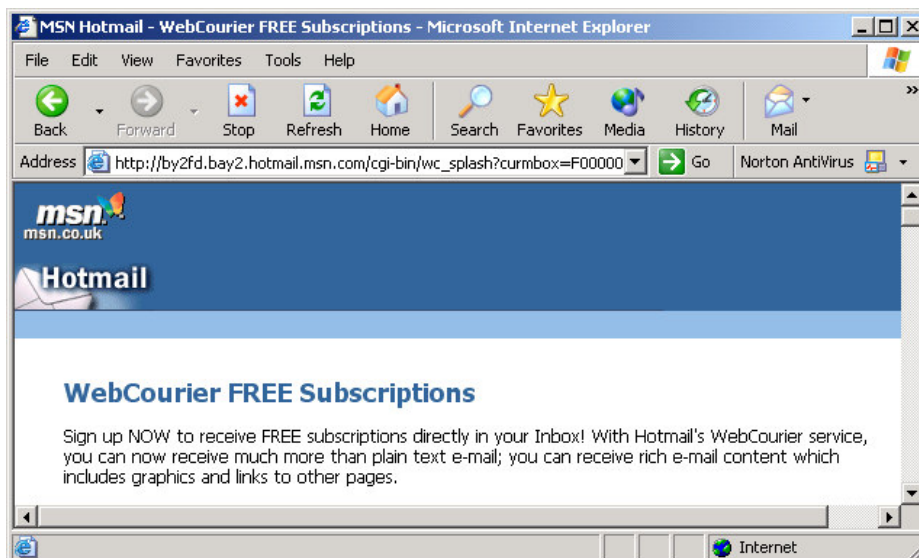
Your new email address

Click on Continue to bring up the next page.

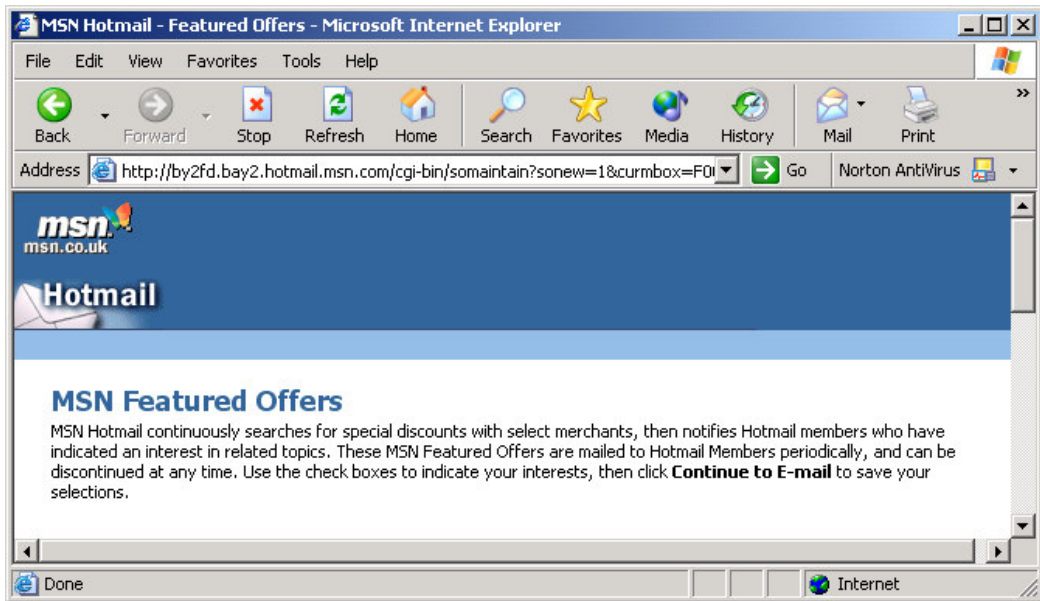


To activate your new email address, click on **FREE E-mail**. This is the option that is almost hidden at the bottom of the page.

A new page appears asking if you wish to sign up for extra information services, which send emails to your account. Again, probably best not to choose any of these – it cuts down the junk mail.

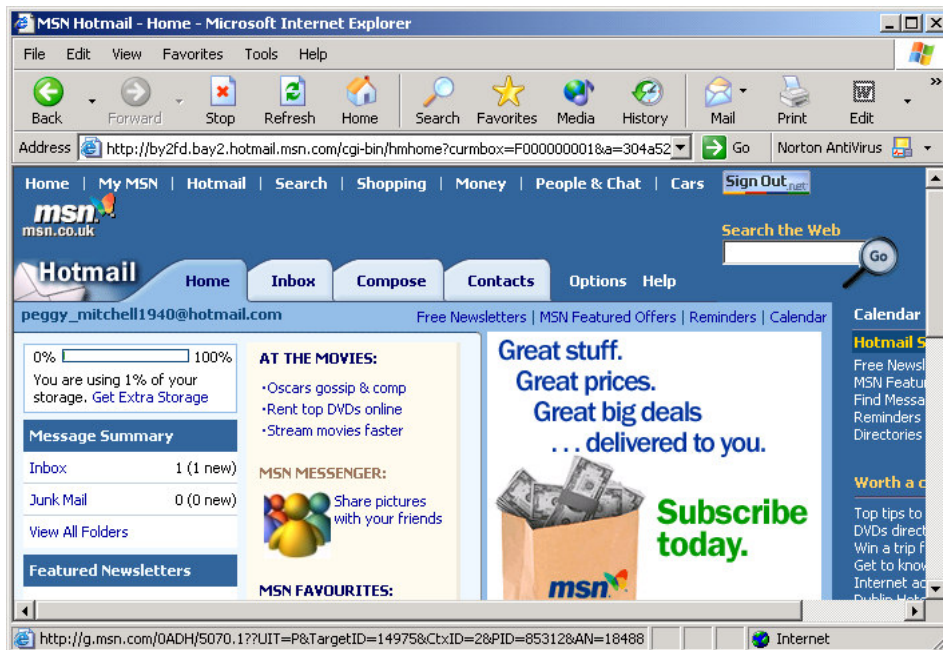


Click on Continue [Continue](#) at the bottom of the page.



The next page also offers a free information service where emails are liberally dumped in your account. Don't choose any of the options and click on [Continue to E-mail](#)

Finally you will reach your email account. You have now set up your account and you are ready to send emails!







## Activity

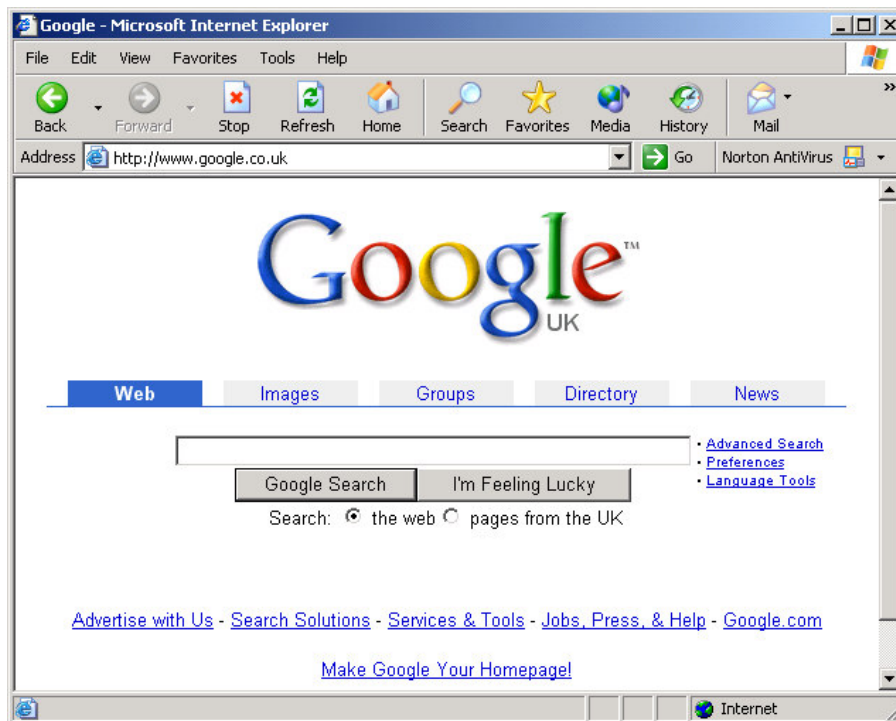
Find out the email address of the person sitting next to you and send them an email.

## How do I search for stuff on the Web?

There are times when you won't know the web address for a particular web site or you want to find out if there are any other web sites you haven't already found that are on a particular topic. This is where using **Search Engines** comes in. Search engines are programs that help you find information on the web. To use a search engine all you need to do is type a keyword into the search box and then (after a few seconds, whilst the search engine does it's searching) you will be presented with a list of websites that include the keyword.

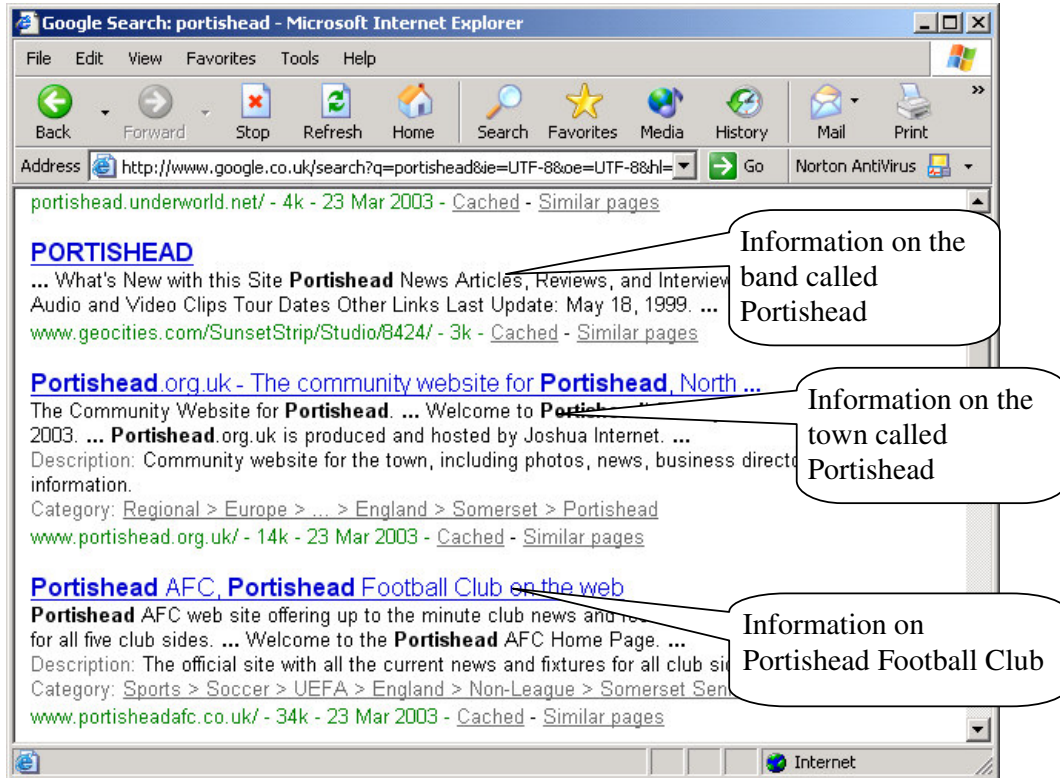
There are many search engines, but for now we will use the google web site. (The website directory at the end of the manual will give a full listing.)

Type in the address for the Google web site: [www.google.co.uk](http://www.google.co.uk).



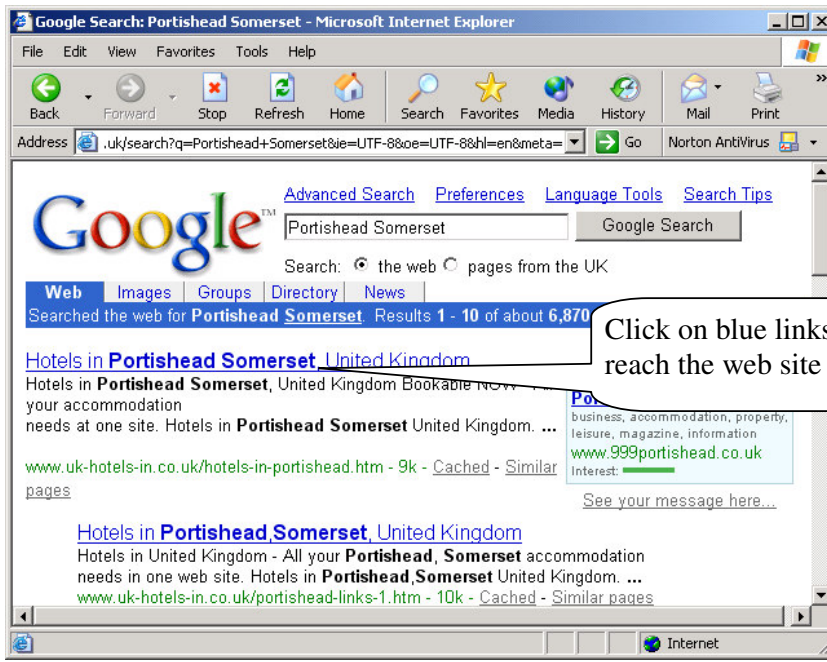
To enter a query into Google, just type a keyword and then press the **Enter** key. Type in “Portishead” into the box on the google web site and press the **Enter** key. You will then get a list of the relevant web pages. These will all be pages that contain the word “Portishead” in them.

With searches where you have just used one keyword it is possible that you will get lots of pages that you aren’t interested in. In the case of searching for pages that contain the word “Portishead” there will be lots of information on the band called Portishead and information on Portishead, North Somerset! It is unlikely you will be interested in both of these topics.



To get more useful information from your search you may need to **refine** your search. Click on **Back** and this time type in the box “Portishead” and “Somerset”. Press **Enter**

This time you should get displayed only pages that are about Portishead in Somerset.



Click on the individual links, in blue, to go to that particular web site.

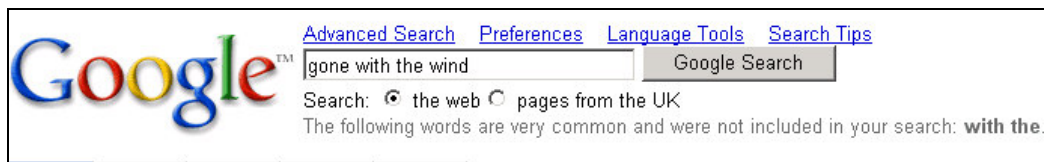


## Activity

Search the web using google for web sites on your favourite holiday destination.

## Tips for Searching

1. Choose your keywords wisely.
  - Be as specific as possible. If you're looking for information on Picasso, enter "Picasso" rather than "painters".
  - Use words likely to appear on a site with the information you want. "Luxury hotel Gran Canaria" gets better results than "really nice places to spend the night in Gran Canaria".
2. Google ignores all common words and characters such as "where", "how" and "the".



But if a phrase containing common words is essential for your search you can put quotation marks around it:

For example, to search for the film, Gone with the Wind, use:



## Tips for Buying On-line

When buying on-line, whether you're buying a flight or a book, it is worth considering the following:

1. Print out and keep any relevant information such as the booking number or reference number until the goods have arrived or you've gone on the flight.
2. Check the details of your booking or purchase before you spend money. Trying to change your purchase may be difficult. For example, budget airlines are frequently difficult to get hold of on the telephone.
3. Make sure the website you use has online security if you pass on information such as credit card details. The individual website will give you details about its security features.

easyJet: airline: booking: easy jet: airlines: flight: air fares: travel: airfares: easijet: ch - Microsoft Internet Explorer

File Edit View Favorites Tools Help

Back Forward Stop Refresh Home Search Favorites Media History Mail Print Edit Discuss

Address <https://www.easyjet.com/EN/book/security.html> Go Norton AntiVirus



[book online](#) [news](#) [flight information](#) [where we fly](#) [about us](#) [jobs](#) [contact us](#) [travel services](#) [ski](#)  
[register](#) [magazine](#)


[a quick guide to easyJet.com](#) | [book online](#) | [carrier's regulations](#) | [conditions of carriage](#) | [credit card security online](#) | [important notes](#) | [privacy policy](#)

## credit card security online

Using your credit card to make purchases via our web site is a secure way to pay for your flights- as safe as booking through our telephone reservations centre. Millions of seats have been booked successfully online with easyJet.

We have put a number of security steps in place to give you, the customer, total confidence when purchasing your easyJet flights through the Internet:

1. All sensitive information, including personal details as well as credit card information, is kept confidential through the use of our secure server software (SSL). This means that



Going on the piste? Visit our one-stop ski shop [click here](#)



Save up to 20% on airport car parking... [click here...](#)

Internet links

Internet

# Glossary

## **Browser**

A program that allows the user to view pages on the World Wide Web.

## **Email**

Messages sent from one user to another over a computer network, usually the internet.

## **Home Page**

The first page loaded when accessing the web.

## **HTML**

Short for **H**yper**T**ext **M**arkup **L**anguage. This is the language in which web pages are created.

## **Internet**

A global network connecting millions of computers.

## **Link**

Also called hyperlinks. They enable the user to move from one web page to another on the web.

## **Modem**

A device that enables the computer signals to be transmitted using the telephone system.

## **Search Engine**

A program that helps find information on the Web.

## **Web Address**

Also called URLs. These are unique addresses that include the name of the computer on which the web site is held and the particular name of the web page.

## **Webmail**

A method of sending emails via a web site.

## **World Wide Web**

A system of computers that hold web sites.

# Web Site Directory

## Internet Service Providers

Freemove	<a href="http://www.freemove.com">www.freemove.com</a>
AOL	<a href="http://www.aol.co.uk/">www.aol.co.uk/</a>
BT Openworld	<a href="http://www.btopenworld.com">www.btopenworld.com</a>
Tiscali	<a href="http://www.tiscali.co.uk">www.tiscali.co.uk</a>
Tesco	<a href="http://www.tesco.net/">www.tesco.net/</a>
One.tel	<a href="http://www.onetel.co.uk/">www.onetel.co.uk/</a>

## Broadband Information

Information on BBC website	<a href="http://www.bbc.co.uk/broadband">www.bbc.co.uk/broadband</a>
Information on BT website	<a href="http://www.bt.com/broadband/">www.bt.com/broadband/</a>

## Web mail

Hotmail	<a href="http://www.hotmail.com">www.hotmail.com</a>
Yahoo	<a href="http://www.mail.yahoo.co.uk">www.mail.yahoo.co.uk</a>

## Local Information

Bristol (things to do)	<a href="http://www.visitbristol.co.uk/">www.visitbristol.co.uk/</a>
@ Bristol centre	<a href="http://www.at-bristol.org.uk/">www.at-bristol.org.uk/</a>
Evening Post	<a href="http://www.epost.co.uk/">www.epost.co.uk/</a>
History, local interest	<a href="http://www.about-bristol.co.uk/">www.about-bristol.co.uk/</a>
West Somerset Railway	<a href="http://www.west-somerset-railway.co.uk/">www.west-somerset-railway.co.uk/</a>

## Travelling by Air

Easyjet	<a href="http://www.easyjet.com/">www.easyjet.com/</a>
Ryanair	<a href="http://www.ryanair.com/">www.ryanair.com/</a>
British Midland	<a href="http://www.bmibaby.com/">www.bmibaby.com/</a>
Cheap Flights	<a href="http://www.cheapflights.co.uk/">www.cheapflights.co.uk/</a>

## Travelling by Train

Train Bookings	<a href="http://www.thetrainline.com">www.thetrainline.com</a>
----------------	--

## TV channels

BBC	<a href="http://www.bbc.co.uk">www.bbc.co.uk</a>
ITV	<a href="http://www.itv.com">www.itv.com</a>
Channel Four	<a href="http://www.channel4.co.uk">www.channel4.co.uk</a>

## Children

Nickelodeon	<a href="http://www.nick.co.uk/">www.nick.co.uk/</a>
Disney	<a href="http://www.disney.co.uk/">www.disney.co.uk/</a>

MTV

[www.mtv.com](http://www.mtv.com)

### **Shopping**

Tescos

[www.tesco.com](http://www.tesco.com)

Sainsburys

[www.sainsbury.co.uk/](http://www.sainsbury.co.uk/)

Amazon

[www.amazon.co.uk](http://www.amazon.co.uk)

### **Search Engines**

Google

<http://www.google.com>

AllTheWeb.com

<http://www.alltheweb.com>

Yahoo

<http://www.yahoo.com>

MSN Search

<http://search.msn.com>

Lycos

<http://www.lycos.com>

Ask Jeeves

<http://www.askjeeves.com>

### **Reference**

Yellow Pages

[www.yell.co.uk](http://www.yell.co.uk)

Maps

<http://multimap.com>

Web Encyclopedia (computing)

[www.webopedia.com/](http://www.webopedia.com/)

Encyclopedia

[www.howstuffworks.com/](http://www.howstuffworks.com/)

## **My Internet Sites of Interest**